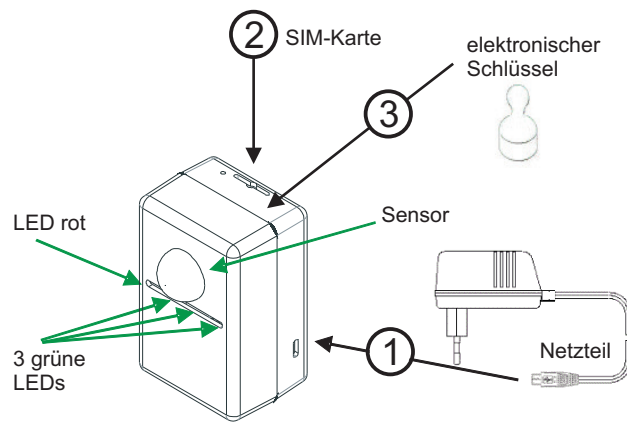




MINI-KEEPER ALARMSYSTEM

SICHERHEIT GANZ EINFACH
SECURITY MADE SIMPLE

MANUAL



1. Introduction

Thank you for using Mini-Keeper, one of the most compact intrusion detection systems on earth. The handling is very simple. There is no need for installation or programming:

► Just connect the system to power and load the battery for 5 minutes, afterward insert the SIMcard and, within a few steps, Mini-Keeper is ready to operate.

This user guide describes in detail how Mini-Keeper works and all necessary items to get it ready to use.

- To start Mini-Keeper you need:
 - a simple usual mobile phone with SIMcard
 - an additional SIMcard for Mini-Keeper
 - a ball-point pen or similar (see illustration)

Advise: Take into account the attached safety instructions for compliance usage of the device, waste removal regulations, and other important items which are the responsibility of the user. Additional information is available at: <http://www.mini-keeper.com>

2. Preparation of the SIMcard for Mini-Keeper

To use the Mini-Keeper, as with any other mobile phone device, you need one SIMcard. Technically, it doesn't make any difference whether the SIMcard is prepaid- or included in a contracted plan.

Usually, each SIMcard will be sent including a PIN code. Mini-Keeper has no keyboard, so therefore, typing in a PIN is not possible.

► The inquiry of the PIN from a SIMcard has to be turned off.

In regards to this, insert the SIMcard for the Mini-Keeper into a mobile phone, using its settings to turn off the query for PIN codes. If necessary, take a look into the reference guide of the mobile phone.

Jot down the caller ID of Mini-Keeper's SIMcard. We recommend storing it directly in the address book of your mobile phone. If you're using several Mini-Keepers, give each of them an equivalent name such "Home", "Boat" or "Garage" to be sure where the alarm is coming from.

manufacturer's specification

Mini-Keeper Alarmsystem ist ein Projekt der:

Lichtpunkt Dessau GmbH
Schulstraße 1
06846 Dessau-Roßlau

Tel. 01805 - Keeper (533735)
Fax: +49 340 5167786

info@mini-keeper.de
www.mini-keeper.de

WEEE-Reg.-Nr. DE 79988931
EAN: 42 6027146 100 9



3. Preparation of the Mini-Keeper

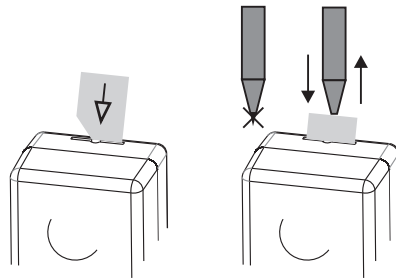
Like a mobile phone, Mini-Keeper has a rechargeable battery, which is integrated into the system and has to be loaded first for a minimum of 5 minutes; it'll take app. 3 hours until it is fully loaded, but the system needs an initial capacity.

► Connect the attached power supply first with the Mini-Keeper and then with power, afterward wait 5 minutes at minimum.

► Insert the prepared SIMcard (query for PIN turned off) into the slot (2) for the SIM card-holder. Have a close look at the illustration on the back side above to insert the card correctly.

Click the card into place by using a tool like a ball pen (with no refill out, see the illustration below). The SIMcard has to be completely inside the Mini-Keeper.

Now the red control-light (LED) will start to blink. Depending on the network coverage of your provider, the red LED will stop after 15 or up to 30 seconds. Mini-Keeper will log into the mobile network like any other mobile phone.



► Set the attached electronic key on the top (in front of the mentioned slot).

Very important advise: The SIM card and the electronic key are small parts, which could be choked by children. Please be sure to deposit them out of their reach.

Three green LEDs will light up together to show that 3 caller IDs can be stored. Each green LED represents one memory place for a caller ID.

► Use your (mobile) phone to call Mini-Keeper.
► Please make sure that the transmission of your caller ID is enabled!

After one or two ring tones, the first green LED will go out and the caller ID will be stored by the Mini-Keeper. To avoid costs for the call, Mini-Keeper refuses the connection.

In this way, you can store up to 3 caller IDs from mobile or land lines phones. We recommend using all memory places, either with 3 different or only one ID.

Now the preparation of Mini-Keeper is finished.

► If you want to change the stored numbers, just repeat the procedure starting with the removal and re-insertion of the SIMcard, make it sure to click it into place.

Remark: The phone which is going to be used for storing the first memory place should be able to receive SMS messages because of Mini-Keeper's optional feature to inform via SMS about account-messages from the provider and a system message to reload the battery.

► If no new caller ID will be stored (by calling Mini-Keeper), it will finish this mode after 3 minutes and the pre-stored numbers will be used again.

► Because there is no option of resetting the Mini-Keeper, from this point on, it will always have a phone number stored. It will either use the most recent number or a new caller ID. If you plan to give the Mini-Keeper to someone else, be sure to tell them to store new numbers before using it, or be present during the re-storing to avoid receiving his or her alarm calls.

4. Operation Mode of Mini-Keeper

Mini-Keeper includes a visible sensitive motion sensor. If a movement is detected, Mini-Keeper will call every stored number successively until one of these accepts or manually refuses the alarm call.

If you take the call of Mini-Keeper, you're able to listen for 30 seconds into the room via the integrated microphone.

► If you set the electronic key on the top of Mini-Keeper, it'll be deactivated; none of the stored numbers will be called while the key is correctly positioned in the middle of the top.

At the bottom of the electronic key is a small magnet, which fixes the key in the right position. To find the position for the key easily, we marked the position on the crown with a red dot. Keep this position in mind (the magnet will always help you to find it) and remove the label with the red dot.

Reaction-times of Mini-Keeper:

• **Time to leave the room after activating** (Removal of the electronic key): **3 minutes**
After every minute, one green LED will go out (optical countdown). If the key was positioned in the right place during the countdown, the alarm procedure will be stopped.

• **Time to enter the room and to put the key in** the right position on the Mini-Keeper: **20 seconds**
• **Time Mini-Keeper turns off** after returning the SIMcard: **60 seconds**

After inserting the SIMcard and clicking it into place, **Mini-Keeper waits 3 minutes** for each number to store.

We recommend always connecting Mini-Keeper with power. The electronics inside control the capacity and prevent an overload.

In case of an electric power outage or in mobile use, the integrated rechargeable battery supplies the power. Similar to mobile phones, depending on the functions Mini-Keeper has to do during this time, the battery will drain after a time (up to several days at most). In this case, you can enable Mini-Keeper to send SMS messages to (only) the first stored number (for cost-saving reasons, this feature is only available as an additional option).

► Send on demand an SMS to Mini-Keeper with the content "sms on" and you'll receive SMS messages about account status from your provider and status of battery. To stop sending messages just send "sms off". Mini-Keeper will send a SMS message each time for confirming.

5. Trouble and status display

LED only light up during countdown, while storing numbers and while in deactivation mode:

Red LED

- **flashes every 10 seconds:** capacity of battery below 25%
- **lights permanently:** PIN-Code of SIMcard not turned off
- **blinks every second:** Searching for mobile phone network - Mini-Keeper is not logged into the mobile phone network, therefore, use this display to find a better position.

All green LED

- **showing countdown** (3 minutes) to indicate the time to leave the room until it's activated.
- **confirm the deactivation mode** by lighting up shortly.

1st green LED

- **lights permanently** while the first caller ID is being stored or for 180 seconds if no call was made for storing, and thus the old numbers will be used.
- **blinks every second** until countdown is finished.

2nd green LED

- **lights permanently** while the second caller ID is being stored or for 180 seconds if no call was made for storing (Storing mode will be finished.).
- **blinks every second** until two-thirds of the countdown is finished.

3rd green LED

- **lights permanently** while the third caller ID is being stored or for 180 seconds if no call was made for storing (Storing mode will be finished).
- **blinks every second** during the first third of countdown.
- **flashes once every 3 minutes** (only if movement was recognized) to announce the deactivation mode.

Overview of the three modes of Mini-Keepers:

- **Off** just remove the SIMcard. If Mini-Keeper is still connected to the power source, the internal rechargeable battery will be further loaded without getting overloaded.
- **Deactivated** or unarmed, if the key sits on the destined position. The system detects motions, but doesn't send an alarm. One green LED blinks approx. every 3 minutes to show it's available and recognizes movements.
- **Activated** or armed is the Mini-Keeper's status, if the key is removed and the countdown of 180 seconds is finished.